

STARTING GUIDE

THANK YOU FOR WORKING WITH OUR SEWING PATTERNS
 MARIDAH ♦ MADE TO MODIFY ♦ CRAFT GARDEN ATELIER ♦ BJD ATELIER

To save you time & stress, please read through this document before opening your download. If you have a question not covered in this starting guide or the pattern instructions document visit maridah.net/pattern-faq for support.

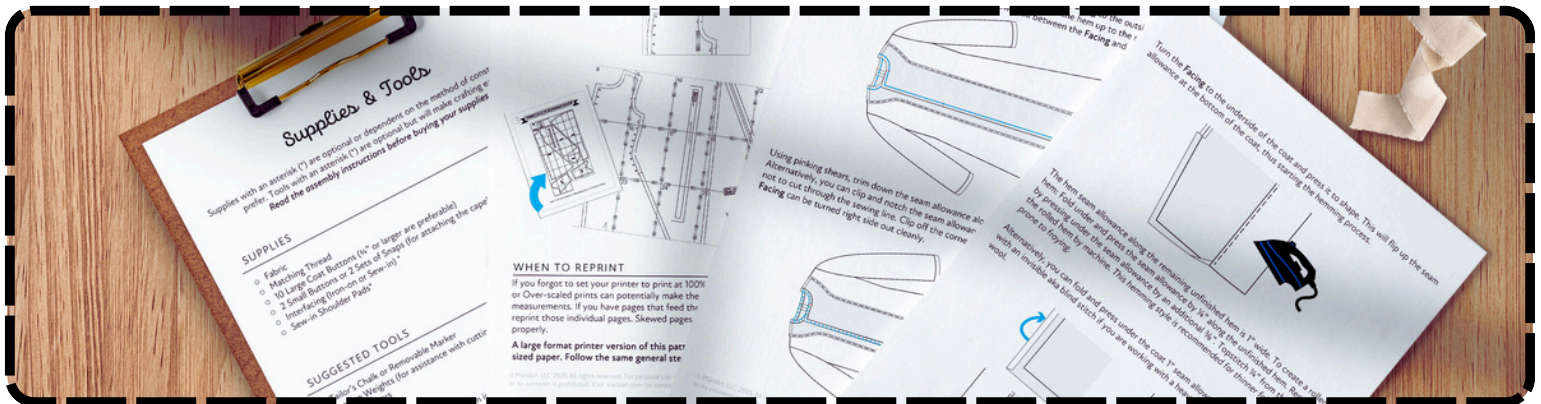


TABLE OF CONTENTS

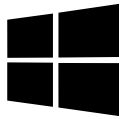


<u>UNZIPPING DOWNLOADED FILES</u>		<u>PAGE 2</u>
<u>LOCATING IMPORTANT DOCUMENTS</u>		<u>PAGE 5</u>
<u>DOWNLOAD A FREE PDF READER</u>		<u>PAGE 7</u>
<u>PRINTER MENU & DRIVER SETTINGS</u>		<u>PAGE 7</u>
<u>TROUBLESHOOTING PRINTING ISSUES</u>		<u>PAGE 9</u>
<u>PRINT ASSEMBLY GUIDE</u>		<u>PAGE 11</u>
<u>ADDITIONAL FAQS & RESOURCES</u>		<u>PAGE 13</u>
<u>YARDAGE CONVERSION CHART</u>		<u>PAGE 14</u>
<u>FABRIC STRETCH CHART</u>		<u>PAGE 15</u>



STEP 1: UN-ZIP THE DOWNLOAD

Files are compressed in ZIP folders to allow for the downloading of large files. **You must unzip the entire download before starting.** All desktops and mobile devices (PC, Mac, Android, iOS, etc.) can unzip files for FREE and without additional software.



For Windows:

Right-click & select "Extract All"



For Mac:

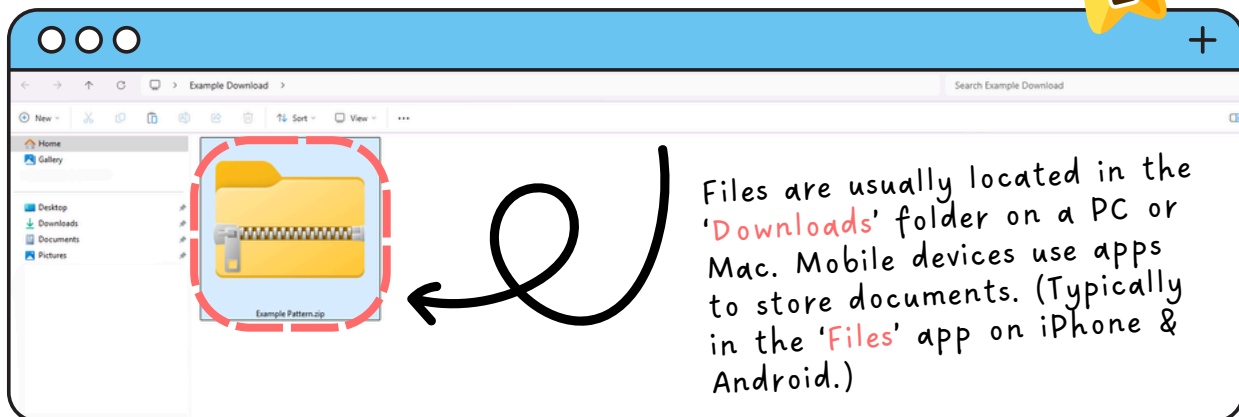
Double-click the file



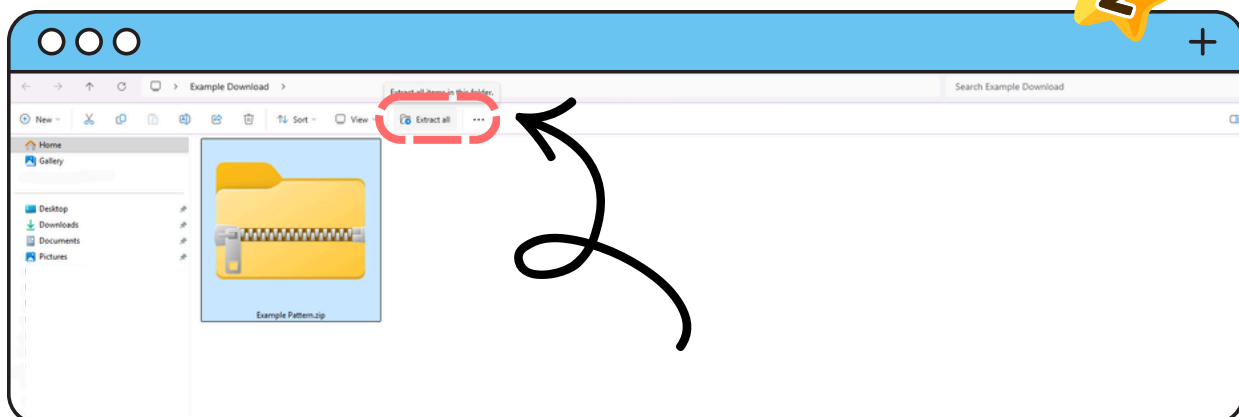
VISUAL GUIDE TO UNZIPPING A DOWNLOAD ON PC

On Windows, it is possible to see the contents of a ZIP file without unzipping, **but the files must be unzipped before you can use them.** The most common cause of file issues is due to not unzipping the download before attempting to use a file. You will likely encounter errors if you skip this step.

LOCATE THE DOWNLOADED FOLDER IN THE FILE BROWSER

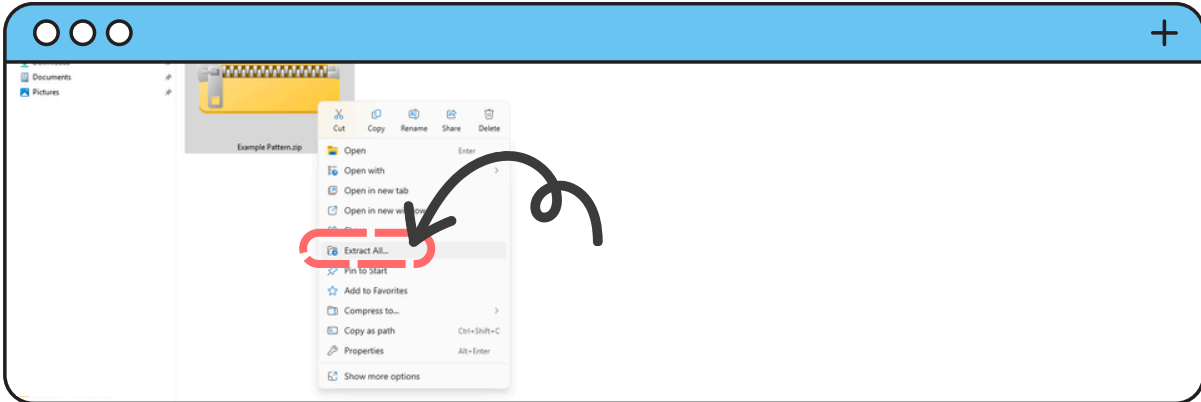


SELECT 'EXTRACT ALL' FROM THE FILE EXPLORER MENU BAR

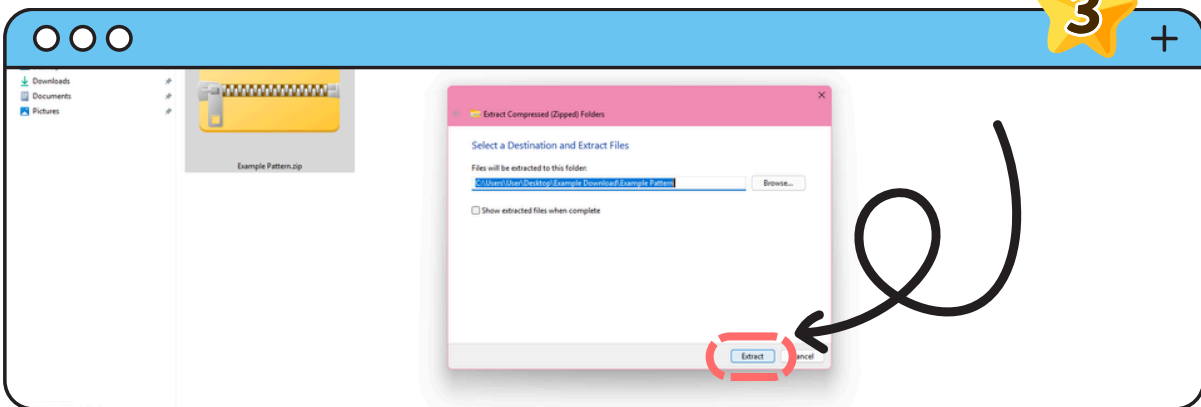


CONTINUED →

-OR- RIGHT CLICK AND SELECT **EXTRACT ALL** FROM POP-UP MENU

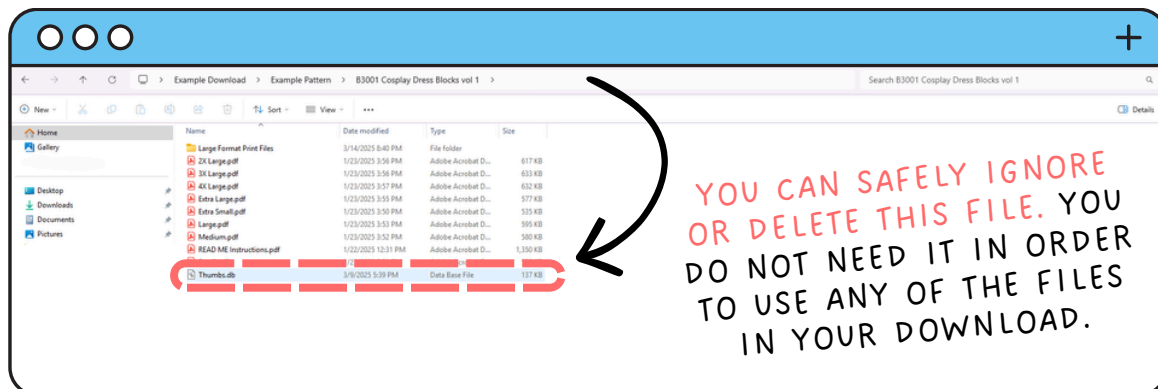


EXTRACT ALL FILES INTO A NEW FOLDER



- ✓ This will automatically create a new folder with the unzipped files in it. There will now be two folders with the same name.
- 📁 Select the new folder (*the one without the zipper icon in the thumbnail*) to access the unzipped files.
- ⚠️ *Selecting the original zipped folder will rerun the extraction process, so only select the new uncompressed folder after extraction is complete.*

NOTE: THUMBS.DB IS A (UNRELATED) SYSTEM FILE.



- ⚠️ **Thumbs.db** is a system file that is hidden by default but it may be visible if your file explorer is set to show hidden files. This system file contains thumbnail image information for a folder. It is automatically created when thumbnail view is enabled.



UNZIPPING WITH OTHER OPERATING SYSTEMS

ON ANDROID:

- ➔ Open **Files by Google**.
- 📁 Navigate to the folder that contains the ZIP file you want to unzip.
- 📁 Select the ZIP file. A pop-up will appear displaying the file contents.
- 👉 Tap **Extract**. You're shown a preview of the extracted files.
- ✓ Tap **Done**. The extracted files are saved in the same folders as the original ZIP file.

📁 There will now be two folders with the same name. Selecting the original zipped folder will rerun the extraction process, so only select the new, uncompressed folder after extraction is complete.



ON MAC/IOS:

- 🖱️ Double-click the ZIP file.
- 📁 The file will auto-extract and become a new uncompressed folder.
- 📁 Open the new folder to access the files.

⚠️ **By default, Safari will auto-decompress a file after download even if it is incomplete.** This will prompt an error message when the file is selected.

TO FIX:

- ⚙️ Go to **Safari > Settings > General**
- 🔴 Uncheck the box next to **'Open "safe" files after downloading'**.
- 🔗 Redownload the ZIP folder.

Incomplete files are frequently the result of a network dropping the connection while in the process of downloading. It can also occur when downloading over a school, hotel, workplace or public network. These types of networks can have restrictions which prevent downloads from being completed.

Once this setting is changed, redownload the file over a home wi-fi or 5G network.

⚠️ If you receive a network connection time-out error message, you will need to use a different wireless connection in order for the download to be completed.



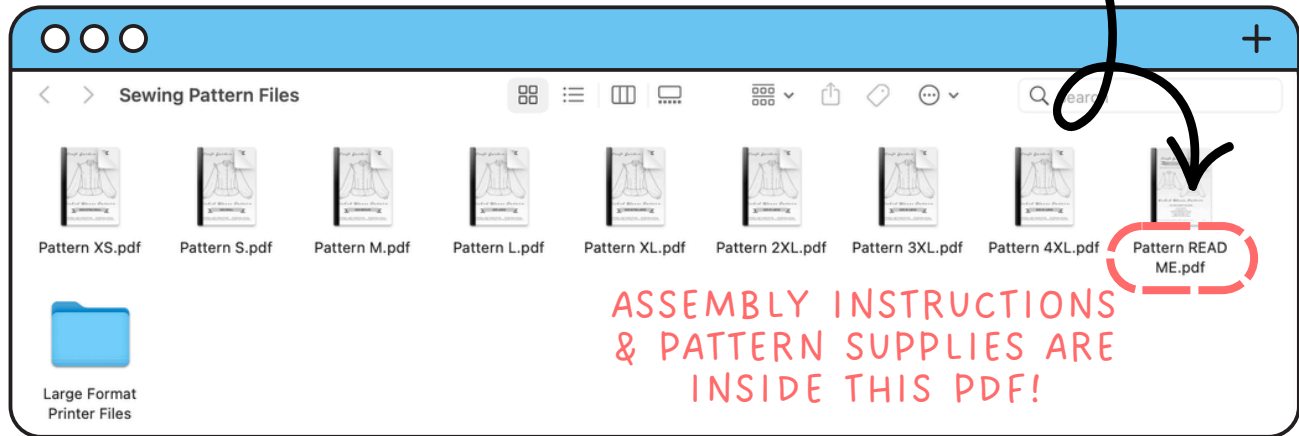
STEP 2: LOCATING IMPORTANT FILES

If you do not see the file or folder you are looking for, unzip the download again, following the previous steps provided to extract ALL files. Using your file browser in '*Details*' mode, which displays file information such as file size, will make it easier to locate files on a PC.



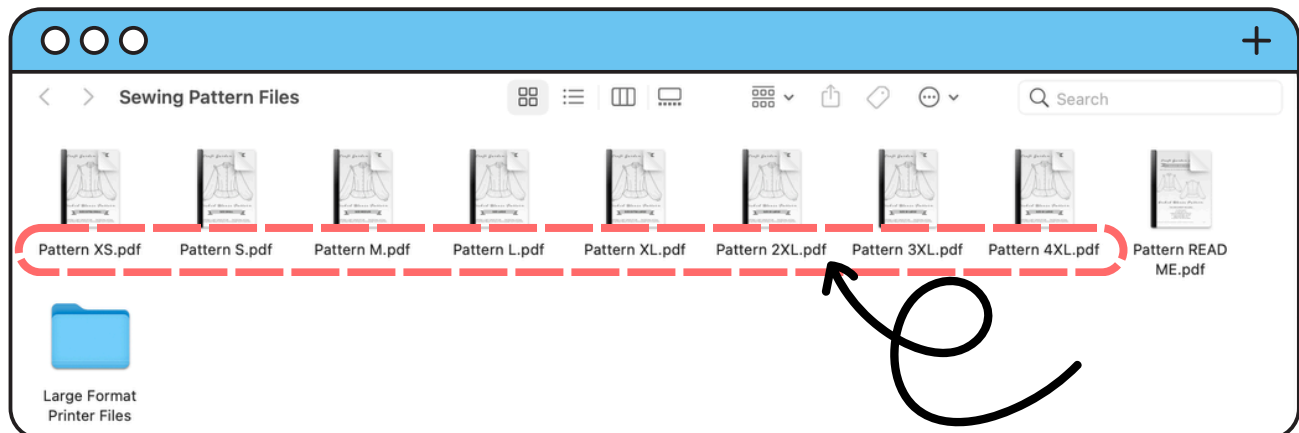
LOCATING THE INSTRUCTIONS & SUPPLIES LIST

Instructions and supplies are located in the document labeled '*READ ME*' in the main folder of the download.



LOCATING & PRINTING YOUR PATTERN SIZE

Each size included with this pattern has its own PDF file. Print-at-home sized PDF files are located in the main folder of the download. The content box is **10" high x 7.5" wide per page** so that the pattern fits centered on multiple paper sizes. No nested patterns are provided or available. **Compare your measurements to the size chart located in the instructions to select which size to print.**





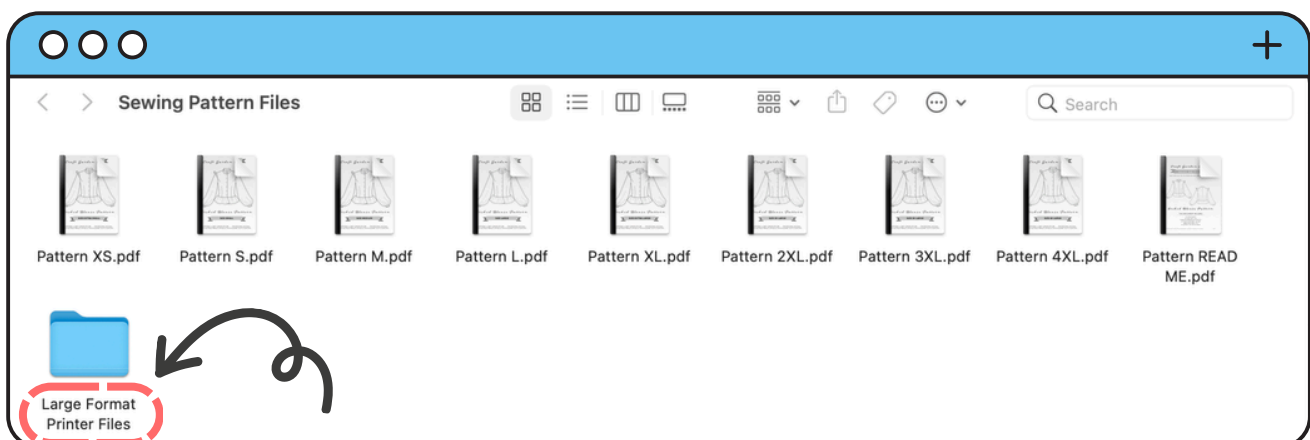
LOCATING & PRINTING LARGE FORMAT PRINTER FILES

When available, plotter paper sized files are located in a folder labeled '**Large Format Printer Files**' inside the main folder of the download. Using them is optional but they require less time & effort to tape together.

Plotter PDFs can be printed at any local copy shop or through an online printer that offers blueprints or plotter printing.

- When ordering, select **A0** (*International Standard*) or **Arch E** (*US Standard*) sized paper.
- Request to print the document at **100% scale**.
- **Do not select a borderless settings**. Choosing borderless printing will alter the print scale.
- The pattern contents occupy a box that is **32" high x 46" wide per page** so that they can be printed centered on to both A0 or Arch E papers.
- The plotter pages are in a '**Landscape**' layout (*meaning the pages are wider than tall.*) If your print service uses a '**Portrait**' layout as default, the page contents are safe to rotate by 90 degrees.
- Selecting '**Black & White**' or '**Greyscale**' is recommended for plotter prints due to printing cost differences.

On occasion, a poster sized print format (Standard Poster/ A1) is included instead of a large format paper sized document. Please check the pattern's instructions document for more information. **Note: not all patterns will include large paper format options.**





STEP 3: OPEN PDF FILES IN A PDF READER

You will need a PDF reader to print the PDF files. We recommend the PDF reader Adobe Acrobat Reader. It is available in various forms for free.

Desktop: <https://get.adobe.com/reader/>

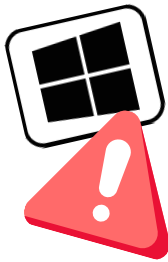
Mobile: <https://acrobat.adobe.com/us/en/mobile/acrobat-reader.html>

Browser Plug-in: <https://www.adobe.com/acrobat/pdf-viewer-extension.html>

Web Version: <https://www.adobe.com/acrobat/online/pdf-editor.html>

● DO NOT USE MICROSOFT WORD OR A WEB BROWSER TO PRINT ●

Word processors & web browsers do not always include native PDF support so they can distort patterns or impact the file's layout. Additionally, they do not offer the robust print settings needed to reliably print a pattern. If you print using one of these programs, we can not assist in troubleshooting print issues that arise, as not all software is designed to print documents to scale.



STEP 4: PRINTER MENU & DRIVER SETTINGS

WINDOWS OS USERS:

✓ Update your printer drivers to the newest version provided by the printer's manufacturer before printing.

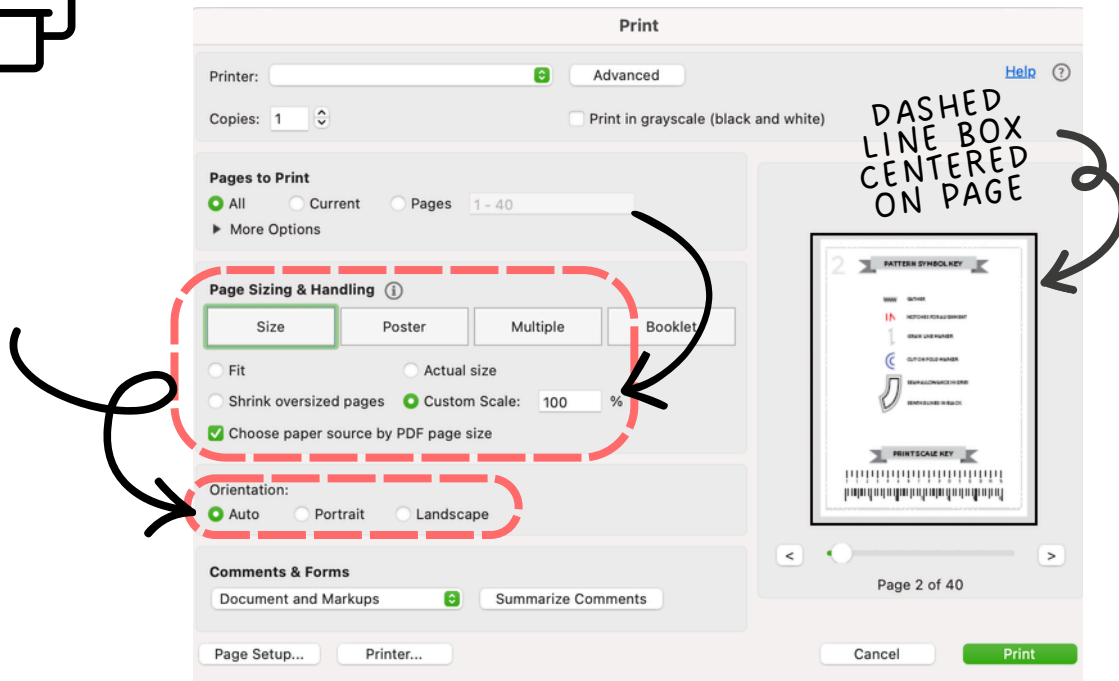
⚙️ The Windows default printer driver settings override all print scale settings and can cause documents to print at the wrong scale, even when using the correct printer menu settings. This is a common cause of scale print issues. *Please check your drivers before printing a test page.*

🖨️ If you use the default Windows printer driver instead of the driver from your printer manufacturer, go to the **Device Manager** and change the printer driver settings to '**100% scale**' or to '**No Scale**'.

CONTINUED →



STEP 4: PRINTER MENU & DRIVER SETTINGS CONTINUED



⚙️ Always test print **ONLY PAGE 2 OF A PATTERN FIRST** to avoid misprinting entire patterns. This page will include a print scale key in the shape of a ruler.

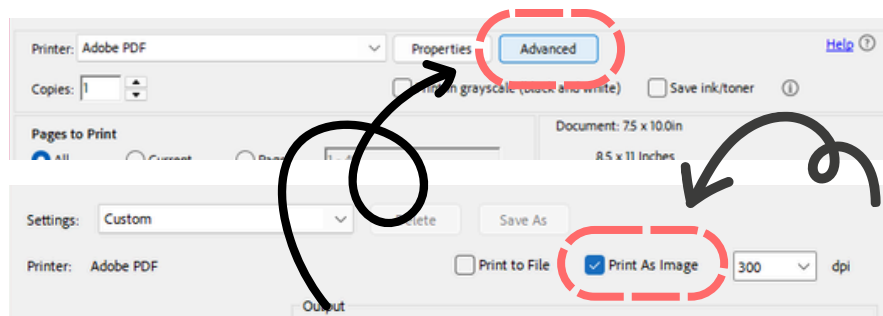
🔪 Set the print scale to **100%** or '**Actual Size**' in the print menu.

Use '**Standard**' print quality when available.

✓ Select page orientation '**Center on Page**' or '**Auto**' to set the pattern content box to print centered on the page.

📄 Select '**Choose the paper source by PDF page size**' when available if your test prints are not printing to scale. The pattern contents fit inside a **10" high x 7.5" wide box** that can be printed out on several paper sizes. Using a page size preset can sometimes override scale settings.

🖨️ If print issues persist, change your print settings to '**Print as Image**'. From Adobe Acrobat Reader's printing menu go to > '**Advanced**' > '**Print As Image**'. This will often resolve communication issues between a device and the printer.



Once you confirm the scale is correct on the test print, follow the steps outlined in the '**Print Assembly Guide**' on page 11 to assemble the paper pattern.



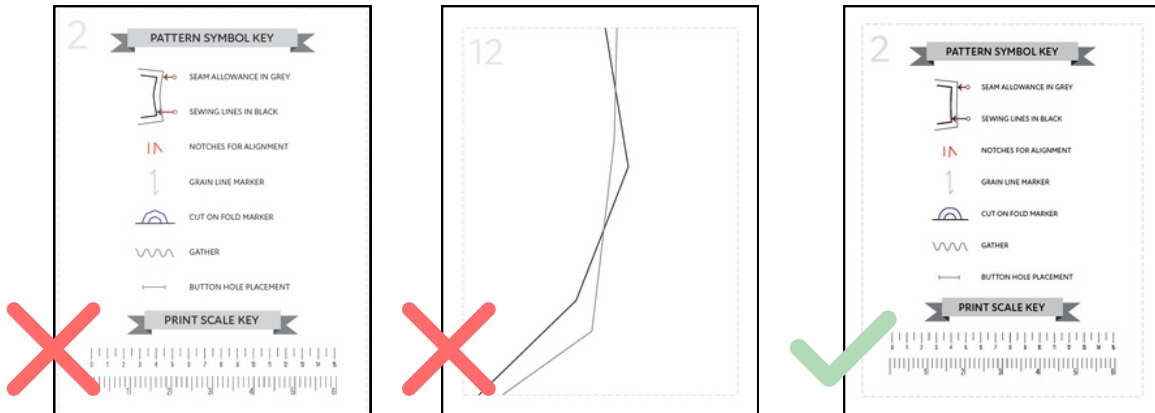
STEP 5: TROUBLESHOOTING PRINTING ISSUES

- ✗ 'DRAFT' SETTINGS MAY NOT PRINT ALL PATTERN LINES ON A LASER PRINTER.
- ✗ DO NOT USE 'BORDERLESS' SETTINGS. IT OVERRIDES THE PRINT SCALE.
- ✗ PATTERN MARKERS ARE PRINTED IN RED AND BLUE TO VISUALLY STAND OUT. LASER PRINTERS CAN PRINT TOO LIGHT WHEN USING THE 'GREYSCALE' SETTING.

FIX: WARPED VECTOR LINES OR MISALIGNED PIECES

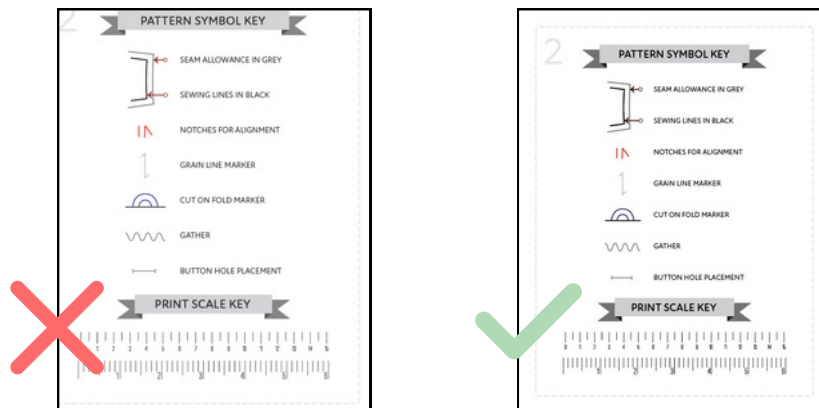
✓ **Print with a PDF reader.** Printing without using a program with native PDF support can cause warped vector lines and scale issues, **even when the print preview image looks correct.**

🖨️ If this problem persists, it may be a communication error between your device and printer. To resolve this, in your print settings in Adobe Acrobat Reader's printing menu go to > **Advanced** > **Print As Image.**




FIX: UNDERSCALING OR OVERSCALING


📏 If your scaling is set to 100% but not printing to scale, the printer driver may be overriding software settings. Update to the printer manufacturer's driver or go to the **Device Manager** and change the printer driver settings to '100% scale' or to 'No Scale'. Then, use the 'Print As Image' setting in Acrobat.

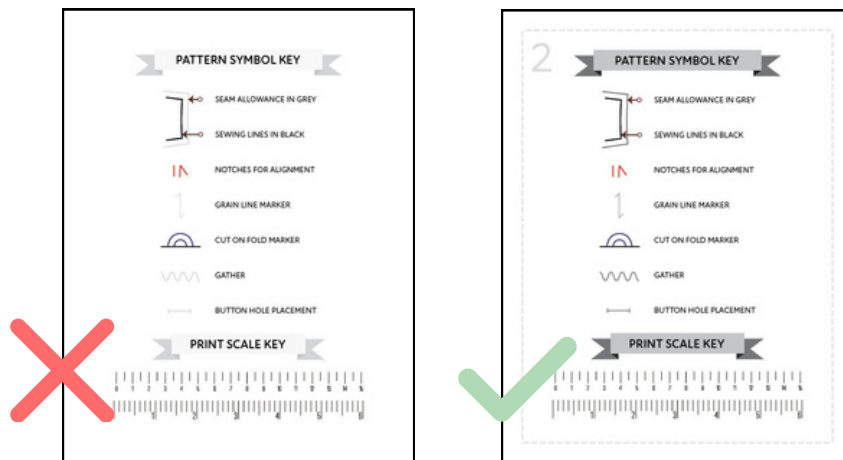





FIX: CROOKED OR OFFSET PRINTS


 Build up of dust and ink can cause pages to skew when sent through the printer rollers, so running routine cleanings is necessary. Run a paper roller cleaning cycle on your printer if paper is not consistently feeding into your printer correctly.

 Check to make sure the preview image in your printer menu shows the content centered, with all 4 sides of the dashed line box visible. Adjust the settings to center the print. *Reprint once all four sides of the 7.5"x10" content box are shown.*



FIX: FADED PRINT OR INVISIBLE GREY LINES

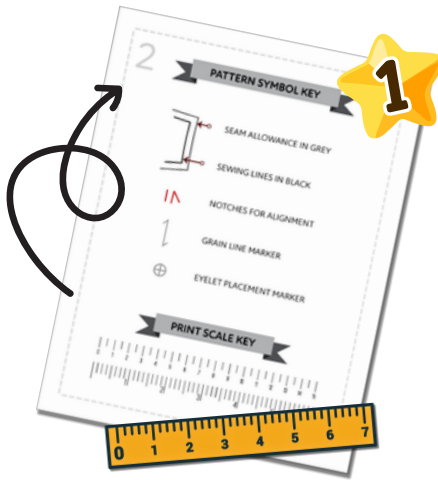
 Use 'Normal' print quality settings or better. Check your ink or toner levels in the printer menu. If the printer ink is dried out or low, **replace it before printing.**

 When using a laser printer, turn up the **darkness and contrast settings** before printing. Lighter greys and other colors printed in greyscale may not show up on the print without increasing the darkness settings of the toner to the maximum. *Reprint the test page until the light grey dashed lines of the 7.5"x10" content box are all visible.*



STEP 6: PRINT ASSEMBLY GUIDE

Each pattern is formatted to print at 100% scale. The contents of each PDF are printed in a box that is 10" high x 7.5" wide, so the pattern fits centered on both 8.5"x 11" Letter and A4 paper.

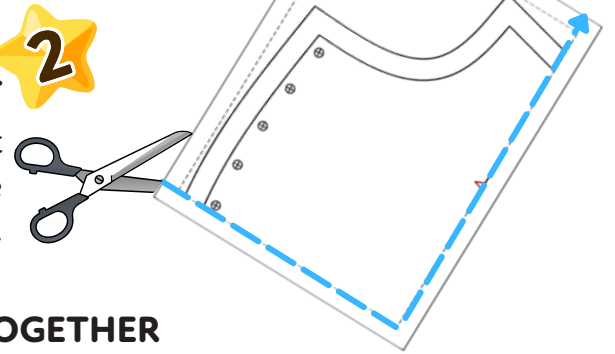


1 MAKE A TEST PRINT

To perform a test print, select only page 2 of the pattern document in your printer menu and print it by itself at 100% scale. Use the included ruler key to confirm the scale. Print the whole document after confirming your print settings are correct.

2 PRINT AND CUT

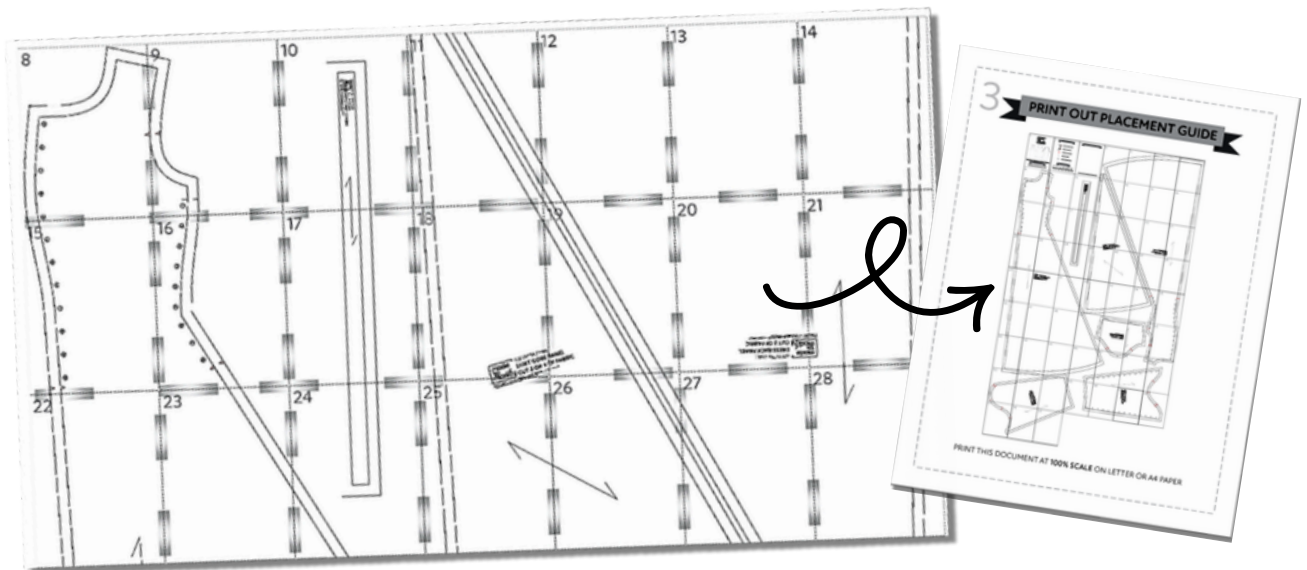
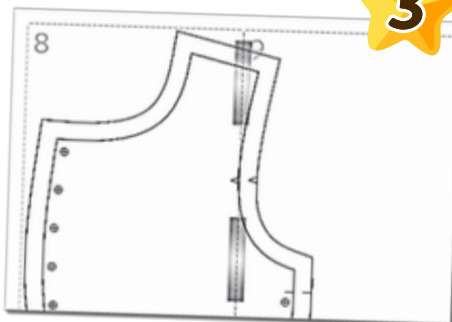
After printing out your size of pattern, cut off the bottom and right side of each page along the dotted lines.



3

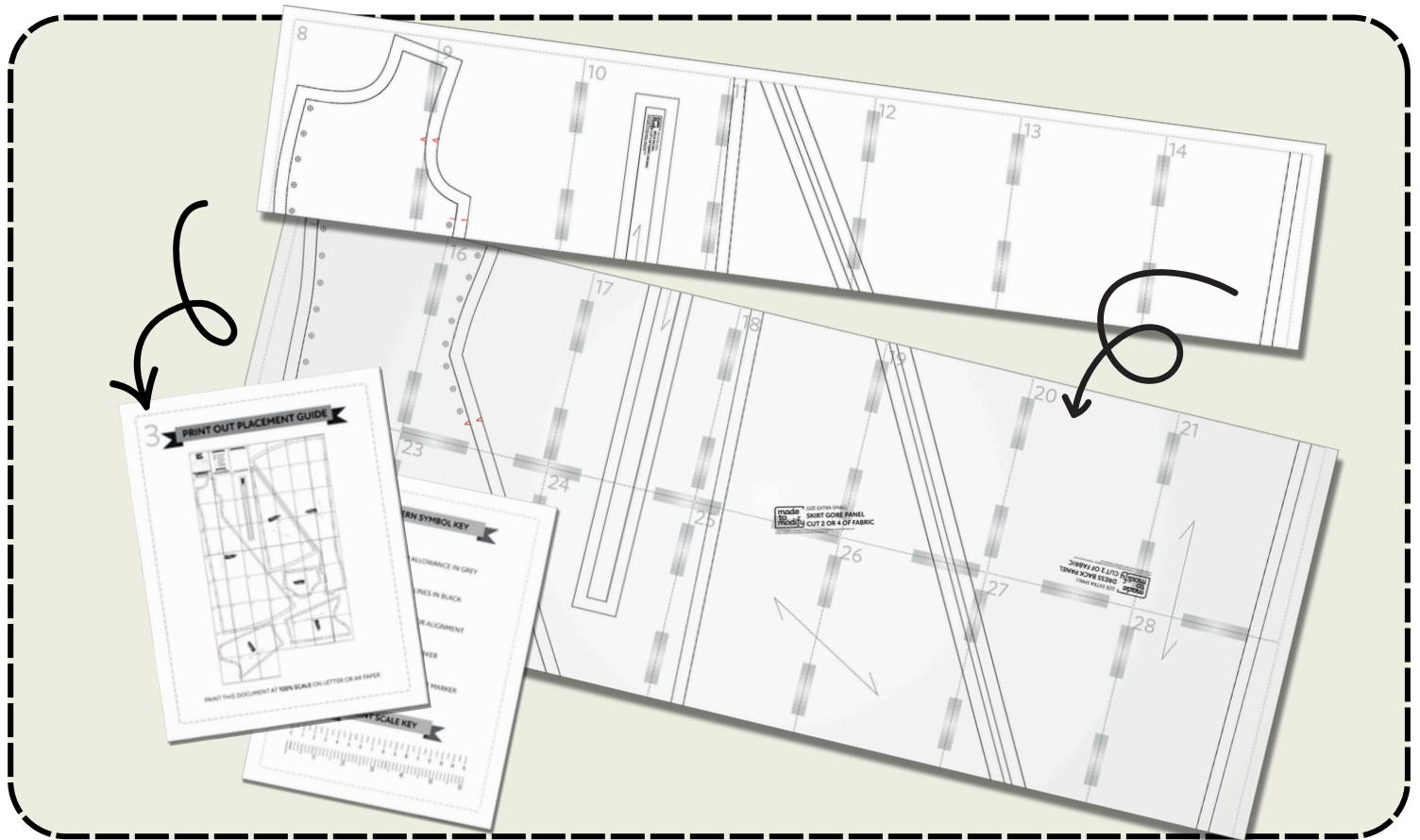
TAPE PAGES TOGETHER

Overlap the right edge of a page over the left margin of the next page. Line up the dotted lines and tape the pages together. Use the printout placement guide on page 3 of each pattern size to help aid you in taping the whole document together. Pages numbers are in the top left corner.



PRINTING & ASSEMBLY TIPS

Line up the corners of the dashed line borders on each page. Uneven assembly can cause the pages to slowly shift out of position as you work. If you have trouble aligning the dashed line corners, **assemble the pattern in rows**, then tape the completed rows together. This pattern is formatted so that it can be assembled on a dining room table. If you do not have access to a dining room table or a craft table, assembly on a hard-surfaced floor is recommended.



If you intend to use only a few pattern pieces, check the page number on which pattern pieces are located by using the **Print Out Placement Guide** on page 3 of a pattern file. Set the page range in your printer menu to print those pages. Page numbers are in the upper left corner of each page.

WHEN TO REPRINT

- If you forgot to set your printer to print at 100% scale, you should reprint. Under-scaled or over-scaled prints can change the pattern pieces.
- If you have pages that feed through the printer crooked, reprint those individual pages.
- **All 4 sides of the grey dashed lined box that surrounds the contents of the pattern need to be visible on the page.** If any side of the 7.5"x10" content box is cut off, reprint that page, making sure to center the print in your printer menu settings first.



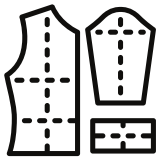
PART 7: **ADDITIONAL FAQs & RESOURCES**



HOW TO PRINT VIDEO

Our Printing & Assembly Guide video outlines basic printer settings, pattern assembly, and tips for avoiding common print errors when using our print-at-home patterns.

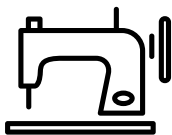
[HTTPS://MARIDAH.NET/PRINTATHOMEVIDEO](https://maridah.net/printathomevideo)



ADDITIONAL SEWING TIPS & TUTORIALS

For guides on sewing skills, visit our store's blog at

[HTTPS://MARIDAH.SHOP/BLOGS/FREE-SEWING-GUIDES](https://maridah.shop/blogs/free-sewing-guides)



FREE PRACTICE SEWING PROJECT

[HTTPS://WWW.MARIDAH.NET/FREEPILLOWPATTERN](https://www.maridah.net/freepillowpattern)

Need a sewing refresher before starting your next project? Download our free peanut pillow pattern, a beginner friendly sewing pattern perfect for practicing sewing skills with, teaching a family member to sew, upcycling old clothing or fabric stash busting!



HOW TO TRANSLATE PATTERN INSTRUCTIONS

As noted in our listings, our patterns are currently only available in English and use US standard measurements and markings. If you would like to read the pattern instructions in another language, we recommend translating the instruction PDF by running it through **Google Translation**, which is fast & free:

[HTTPS://TRANSLATE.GOOGLE.COM](https://translate.google.com)

Note: Do not run pattern files through a translator as it will alter the pattern. Use this translation service only on the 'Read Me' document and this 'Starting Guide' document.



YARDAGE CONVERSION CHART

The fabric available in your local store may vary in width. The chart below provides a rough estimate for converting fabric widths. Use it to convert yardage estimates from a pattern's instructions or in combination with your own estimates using a measuring tape or yardstick to calculate yardage after assembling the pattern pieces for your size.

58"	150 cm	54"	140 cm	50"	127 cm	45"	115 cm	41"	104 cm
Yards	Meter	Yards	Meter	Yards	Meter	Yards	Meter	Yards	Meter
1.00	0.90	1 1/8	1.00	1 1/4	1.10	1 3/8	1.30	1 1/2	1.40
1 1/4	1.10	1 3/8	1.30	1 1/2	1.40	1 5/8	1.50	1 3/4	1.60
1 3/8	1.30	1 1/2	1.40	1 5/8	1.50	1 3/4	1.60	2.00	1.80
1 5/8	1.50	1 3/4	1.60	1 3/4	1.60	2 1/8	1.90	2 1/4	2.10
1 3/4	1.60	1 7/8	1.70	2.00	1.80	2 1/4	2.10	2 1/2	2.30
1 7/8	1.70	2.00	1.80	2 1/4	2.10	2 1/2	2.30	2 3/4	2.50
2.00	1.80	2 1/4	2.10	2 3/8	2.20	2 3/4	2.50	2 7/8	2.60
2 1/4	2.10	2 3/8	2.20	2 5/8	2.40	2 7/8	2.60	3 1/8	2.90
2 3/8	2.20	2 5/8	2.40	2 3/4	2.50	3 1/8	2.90	3 3/8	3.10
2 5/8	2.40	2 3/4	2.50	3.00	2.70	3 3/8	3.10	3 5/8	3.30
2 3/4	2.50	2 7/8	2.60	3 1/4	3.00	3 5/8	3.30	3 7/8	3.50
2 7/8	2.60	3 1/8	2.90	3 3/8	3.10	3 7/8	3.50	4 1/8	3.80
3.00	2.70	3 3/8	3.00	3 3/4	3.30	4 1/8	3.90	4 1/2	4.20



FABRIC STRETCH CHART

Use this chart to measure the percentage of stretch in a 4" long swatch of fabric. *Note: Only patterns designed for stretch materials or patterns designed with negative ease will require this measurement.*

